

Model SMA Series Miniature S-Type Load Cell (U.S. and Metric)

Why the Interface model SMA Miniature S-Type Load Cell is the best in class:

- Proprietary Interface temperature compensated strain gages
- Performance to .05%
- Small compact design
- Tension and compression



STANDARD CONFIGURATION

- 5 ft Integral Cable (SMA-nn)

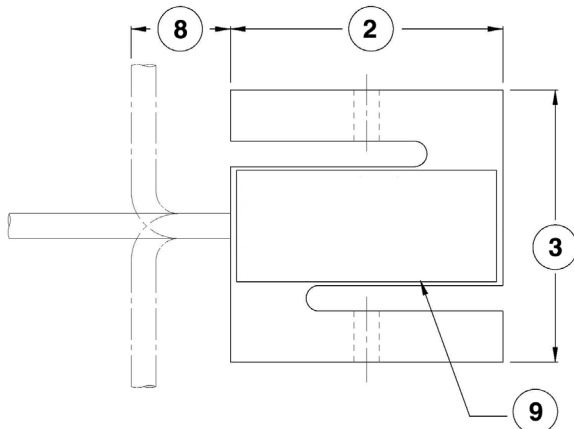
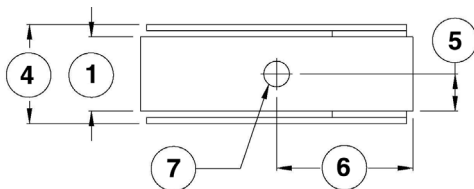
OPTIONS*

- Extra Cable Length
- Standardized Output

ACCESSORIES*

Instrumentation

*See appendix for more technical information



SPECIFICATIONS

ACCURACY – MAX	
Nonlinearity - % FS.....	+/- 0.05
Hysteresis - % FS.....	+/- 0.05
Nonrepeatability - % RO.....	+/- 0.02
Creep, in 20 min - %.....	+/- 0.05
TEMPERATURE	
Compensated Range - °F.....	15 to 115
Compensated Range - °C.....	-10 to 45
Operating Range - °F.....	-65 to 200
Operating Range - °C.....	-55 to 90
Effect on Output - %/°F – MAX.....	+/- 0.0008
Effect on Output - %/°C – MAX.....	+/- 0.0014
Effect on Zero - % RO/°F – MAX.....	+/- 0.005
Effect on Zero - % RO/°C – MAX.....	+/- 0.009
ELECTRICAL	
Rated Output- mV/V (nominal).....	2.5
Zero Balance - %RO.....	-0.6 to 0.0
Bridge Resistance – Ohm (nominal).....	350
Excitation Voltage – MAX.....	15 VDC
Insulation Resistance – Megohm.....	> 5000
MECHANICAL	
Calibration.....	Tension
Safe Overload - % CAP.....	150
Cable length – ft.....	5

DIMENSIONS

See Drawing	CAPACITY	
	US (LBF)	Metric (N)
	15, 100, 150, 200	60, 500, 600, 900
	inch	mm
①	0.38	9.53
②	1.38	35
③	1.38	35
④	0.56	14.2
⑤	0.19	4.8
⑥	0.69	17.5
⑦	#8-36 UNF - 2B	M4 X .7 - 6
⑧	0.5	12.7
⑨	Identification Label	