

# Model SSM Sealed S-Type Load Cell (U.S. & Metric)



**Why the Interface model SSM Sealed S-Type Load Cell is the best in class:**

- Proprietary Interface temperature compensated strain gages
- Environmentally sealed
- .02% nonrepeatability
- .0008%/°F (.0015%/°C) temp. effect on output
- .025% creep
- Tension and compression

## STANDARD CONFIGURATION

- 10 ft Integral Cable (SSM-AJ-nn)  
 <or> PC04E-10-6P Standard Connector (SSM-AF-nn)  
 (Connector available only in 500-5K lbf capacities)

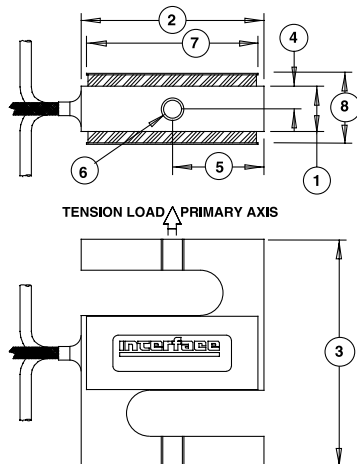
## OPTIONS\*

- PC04E-10-6P Connector (SSM-500 and above)
- LEMO Connector
- Standardized Output
- High Temperature
- Extra Cable Length

## ACCESSORIES\*

- Load Button
- Instrumentation
- Mounting Hardware

\*See appendix for more technical information



## SPECIFICATIONS

### ACCURACY – (MAX ERROR)

Nonlinearity-% FS	±0.05
Hysteresis-% FS	±0.03
Nonrepeatability-% RO	±0.02
Creep, in 20 min-%	±0.025

### TEMPERATURE

Compensated Range-°F	0 to 150
Compensated Range-°C	-15 to 65
Operating Range-°F	-65 to 200
Operating Range-°C	-55 to 90
Effect on Output-%/°F – MAX	±0.0008
Effect on Output-%/°C – MAX	±0.0015
Effect on Zero-% RO/°F – MAX	±0.0015
Effect on Zero-% RO/°C – MAX	±0.0027

### ELECTRICAL

Rated Output-mV/V (Nominal)	3
Zero Balance-% RO	±1
Bridge Resistance-Ohm (Nominal)	350
Excitation Voltage – MAX	15 VDC
Insulation Resistance-Megohm	> 5000

### MECHANICAL

Calibration	Tension
Safe Overload-% CAP	150
Cable length-ft	10
Natural Frequency/Deflection:	

lbf	N	Deflection (inches)	Nat. Freq. (Hertz)
50	200	.003	1500
100	500	.004	1850
150	500	.004	1850
250	1000	.006	2350
500	2kN	.005	2150
750	n/a	.005	2350
1000	5kN	.005	3350
2000	10kN	.005	2400
3000	n/a	.005	3000
5000	20kN	.005	2520

## DIMENSIONS

See Drawing	CAPACITY							
	U.S. (lbf)	Metric (N)	U.S. (lbf)	Metric (N)	U.S. (lbf)	Metric (kN)	U.S. (lbf)	Metric (kN)
	inch	mm	inch	mm	inch	mm	inch	mm
50	200	100, 150, 250	500, 700, 1000	500, 750, 1K, 2K, 3K	2, 5, 10	5K	20	
①	0.50	12.7	0.50	12.7	1.00	25.4	1.50	38.1
②	2.00	50.8	2.00	50.8	2.00	50.8	2.50	63.5
③	2.50	63.5	2.50	63.5	3.00	76.2	3.50	88.9
④	0.25	6.40	0.25	6.40	0.50	12.7	0.75	19.1
⑤	1.00	25.4	1.00	25.4	1.00	25.4	1.25	31.8
⑥	1/4-28 UNF-2B	M6 x 1-6H	1/4-28 UNF-2B	M6 x 1-6H	1/2-20 UNF-2B	M12 x 1.75-6H	5/8-18 UNF-2B	M16 x 2-6H
⑦	1.88	47.8	1.88	47.8	1.88	47.8	2.38	60.5
⑧	0.82	20.8	0.72	18.3	1.22	31.0	1.75	44.5