

# Model MSC Small Diameter High Capacity Load Button

Why the Interface model MSC Small Diameter High Capacity Load Button is the best in class:

- Proprietary Interface temperature compensated strain gages
- Small compact design
- Environmentally sealed
- Stainless steel construction
- Low deflection



## STANDARD CONFIGURATION

5 ft Integral Cable

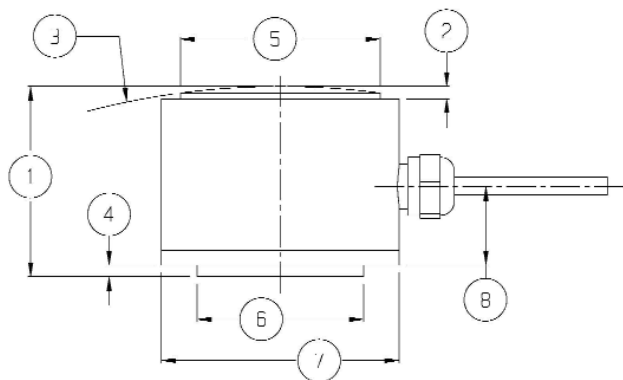
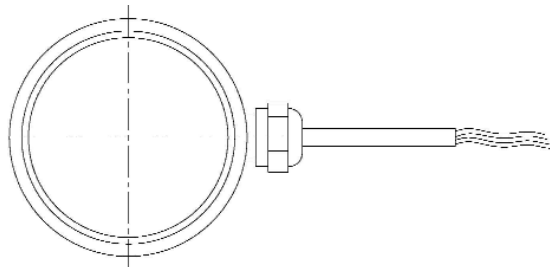
## OPTIONS

Extra Cable Length

## ACCESSORIES

Instrumentation

Consult factory for more technical information



## SPECIFICATIONS

ACCURACY – MAX	
Nonlinearity - % FS.....	±0.05
Hysteresis - % FS.....	±0.05
Nonrepeatability - % RO.....	±0.10
Creep, in 20 min - %.....	±0.15
TEMPERATURE	
Compensated Range - °F.....	70 to 170
Compensated Range - °C.....	21 to 77
Operating Range - °F.....	-40 to 175
Operating Range - °C.....	-40 to 80
Effect on Output - %/°F – MAX.....	±0.009
Effect on Output - %/°C – MAX.....	±0.005
Effect on Zero - % RO/°F – MAX.....	±0.0036
Effect on Zero - % RO/°C – MAX.....	±0.002
ELECTRICAL	
Rated Output- mV/V (nominal).....	.2 +40%/-20%
Zero Balance - %RO.....	±2
Bridge Resistance – Ohm (nominal).....	350 +50/-3.5
Excitation Voltage – MAX.....	15 VDC
Insulation Resistance – Megohm.....	5000
MECHANICAL	
Calibration.....	Compression
Safe Overload - % CAP.....	150
Cable length – ft.....	5

## DIMENSIONS

See Drawing	CAPACITY	
	U.S. (lbf)	Metric (N)
	15K, 20K, 30K	65K, 90K, 130K
	inch	mm
①	1.00	25.4
②	0.06	1.52
③	R 4.0 ±.5	101.6 ±13
④	0.06	1.52
⑤	1.05	26.67
⑥	0.875	22.23
⑦	1.25	31.75
⑧	.5 ±0.1	12.32